

Zwei Adress-Objekte anlegen (Single-Dynamic sowie Range-Dynamic).

The screenshot shows the ZyXEL ZyWALL USG 20 configuration interface. The left sidebar contains a 'CONFIGURATION' menu with various options like Licensing, Network, Interface, Routing, Zone, DDNS, NAT, HTTP Redirect, ALG, IP/MAC Binding, Auth. Policy, Firewall, VPN, BWM, AntiX, Object, User/Group, Address, Service, Schedule, AAA Server, Auth. Method, Certificate, ISP Account, SSL Application, Endpoint Security, System, and Log & Report. The 'Address' tab is selected, showing a table of configuration items.

#	Name	Type	Address
1	DMZ_SUBNET	INTERFACE SUBNET	dmz-192.168.3.0/24
2	Dynamic	HOST	0.0.0.0
3	DynamicRANGE	RANGE	0.0.0.0-255.255.255.255
4	LAN1_SUBNET	INTERFACE SUBNET	lan1-192.168.1.0/24
5	LAN2_SUBNET	INTERFACE SUBNET	lan2-192.168.99.0/24

At the bottom of the table, there is a pagination control: 'Page 1 of 1' and 'Show 50 items'. The status 'Displaying 1 - 5 of 5' is shown at the bottom right of the table area.

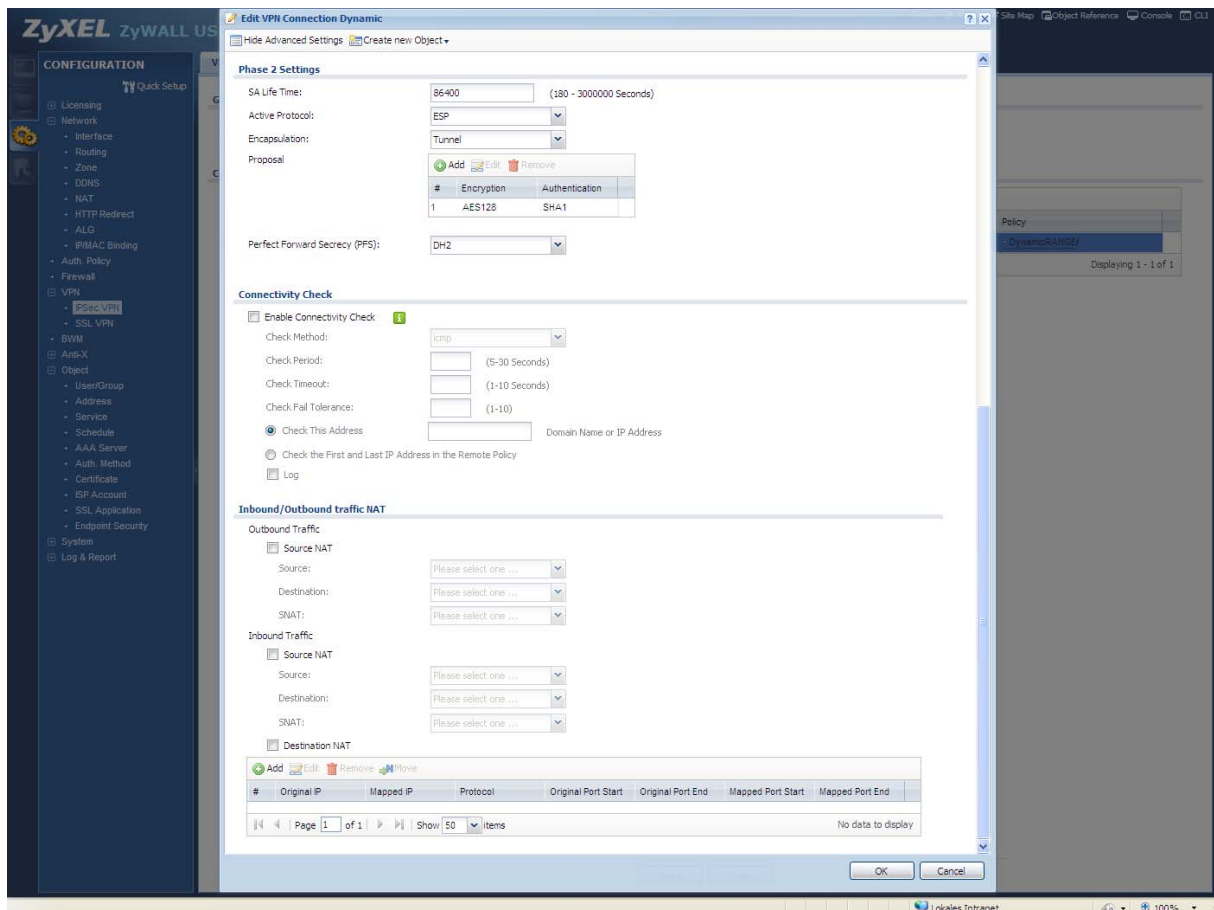
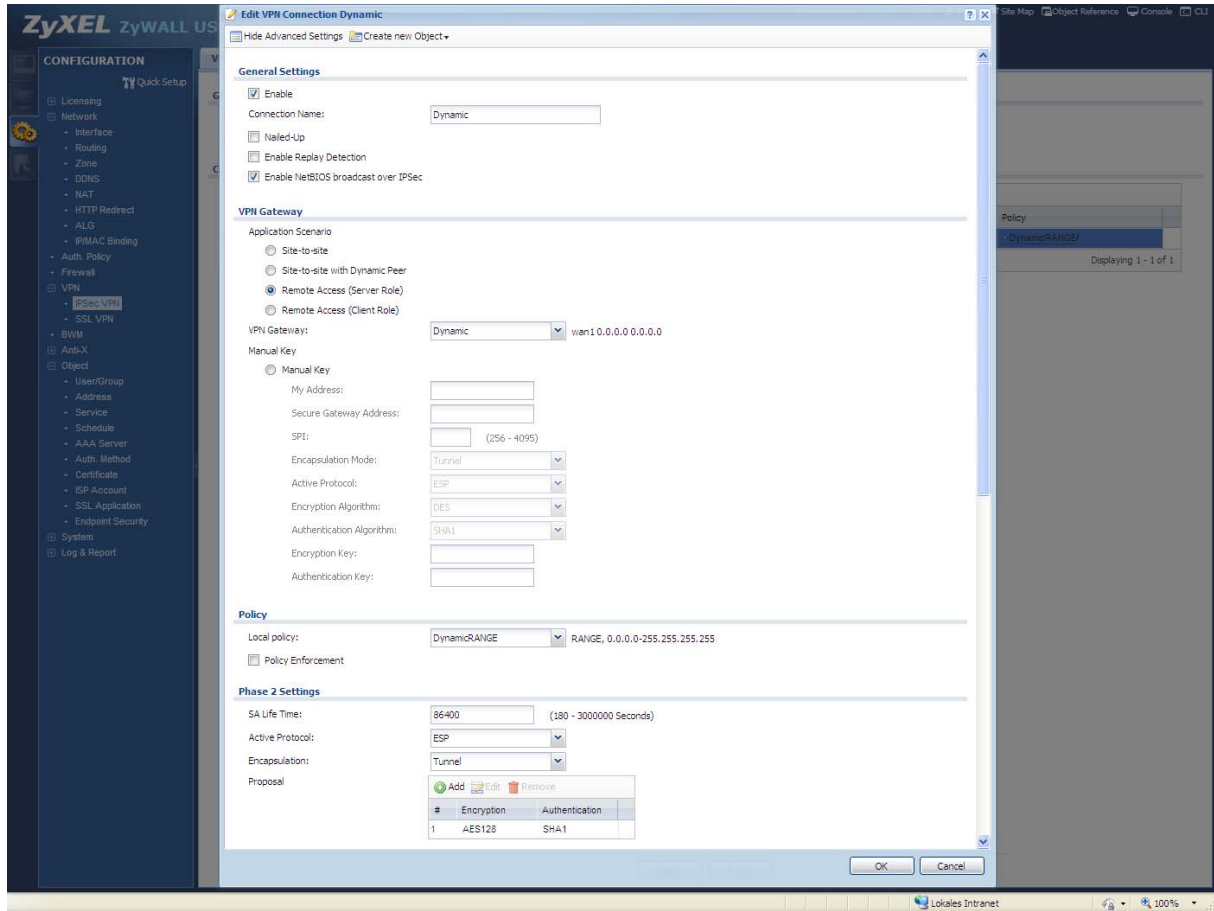
VPN-Gateway Policy anlegen (das korrekte WAN-Interface beachten, ggf. wan1\_ppp).

The screenshot shows the configuration page for a Dynamic VPN Gateway on a ZyXEL ZyWALL USG 20. The interface is divided into several sections:

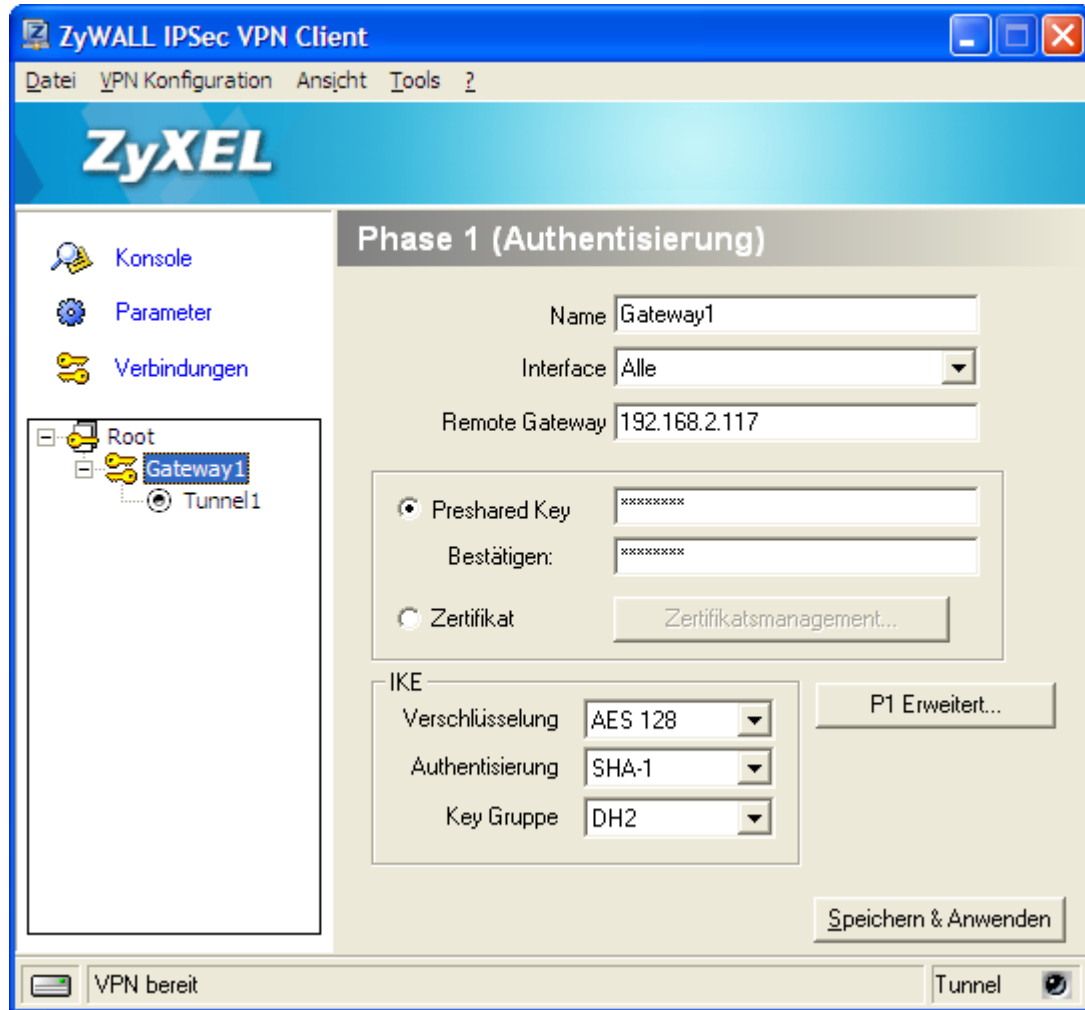
- General Settings:** Includes a checked "Enable" option and a "VPN Gateway Name" field set to "Dynamic".
- Gateway Settings:**
  - My Address:** The "Interface" is set to "wan1", with a DHCP client address of "192.168.2.120/255.255.255.0".
  - Peer Gateway Address:** Both "Primary" and "Secondary" static addresses are set to "0.0.0.0". The "Dynamic Address" radio button is selected.
- Authentication:**
  - The "Pre-Shared Key" is "12345678".
  - The "Certificate" section is set to "Default".
  - "Local ID Type" is "IP" with "Content" "0.0.0.0".
  - "Peer ID Type" is "Any".
- Phase 1 Settings:**
  - "SA Life Time" is "86400" (180 - 3000000 Seconds).
  - "Negotiation Mode" is "Main".
  - A "Proposal" table is shown with one entry: "1" with "AES128" encryption and "SHA1" authentication.
  - "Key Group" is "DH2".
  - Options for "NAT Traversal" and "Dead Peer Detection (DPD)" are checked.
- Extended Authentication:** "Enable Extended Authentication" is unchecked. "Server Mode" is selected with a "default" value.

The interface includes a left-hand navigation menu, a top status bar, and a bottom taskbar with "OK" and "Cancel" buttons.

VPN-Connection (Phase-2) anlegen (Dynamic-Singe oder Dynamic-Range Adress-Objekt) wählen.



Darstellung Phase-1:



Darstellung Phase-2:

