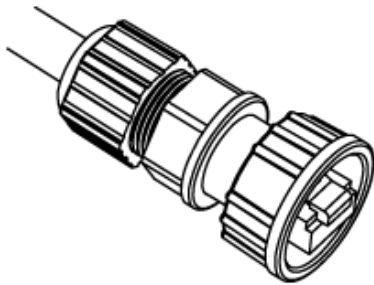


Waterproof RJ45 Plug

Field Installation Guide



Recommendations:

- Although the device is IP-66 certified, place it in a location with a roof to cover it to reduce the temperature deviation.
- Place the device with the antenna pointing down.
- Use a 24 AWG wire gauge Ethernet cable.

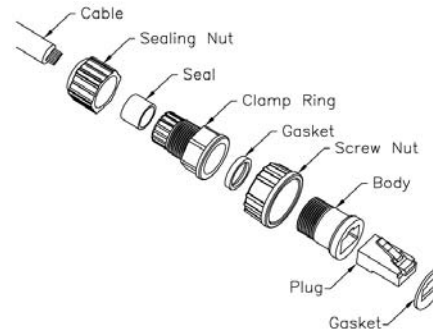
Notes:

- Use an appropriate Cat-5e Ethernet cable with a good sheath.
- When assembling the RJ-45 water-proof cover, make sure every component is properly installed and tightened.

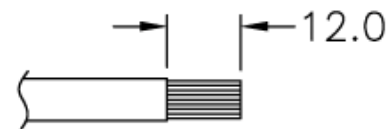
Warning:

- ✿ **Make sure you apply the water-proofing tape properly for enhanced protection after assembling and connecting the water-proof plug.**

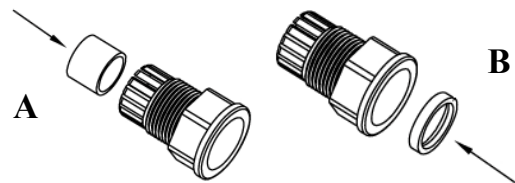
1. Check package contents.
(*Ethernet Cable is not included)



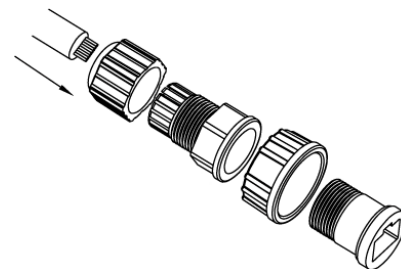
2. Strip the cable sheath.



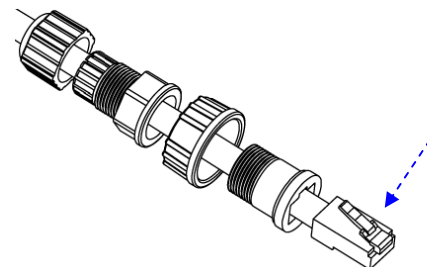
3. Insert the seal into the **rear** of the clamp ring (A). Insert the gasket into the front end of the clamp ring (B).



4. Insert the stripped end of the cable into the body, the screw nut, the sealing nut and the clamp ring.



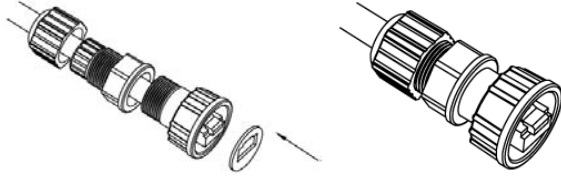
5. Crimp the plug onto the stripped cable.



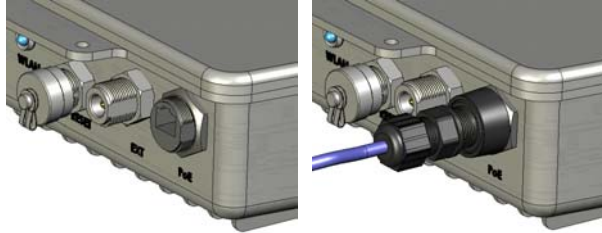
Over



6. Insert the gasket into the front end of the connector and put the screw nut on the back.



7. Connect the clamp ring and sealing nut to the **rear** of the connector and clamp ring. **Hold the assembly firmly and tighten by hand.**



8. Wrap the waterproof RJ45 tightly with the waterproofing tape for protection from water leakage. (The wrapped area of the RJ45 should cover from the device's enclosure to the cable.)

✿ Make sure you apply the water-proofing tape properly for enhanced protection.

